

Tech Specs

UniFi UISP Branding

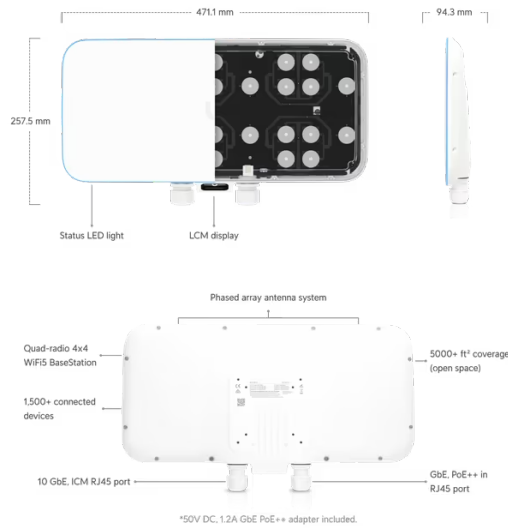
UniFi Cloud Gateways WiFi Switching Cloud Keys & Gateways Camera Security Door Access Phone System New Integrations Accessories

WiFi > [WiFi BaseStation XG](#)

Datasheet

Installation Guide

Marketing Images



Mechanical

Dimensions	471.1 x 257.5 x 94.3 mm (18.6 x 10.1 x 3.7")
Weight	3.2 kg (7.1 lb)
Weatherproofing	IP67

Hardware

Networking interface	(1) GbE RJ45 port (1) 1/10 GbE ICM Ethernet port
Management interface	Ethernet Bluetooth
Power method	PoE++
Power supply	Gigabit PoE++ adapter 50V DC, 1.2A (Included)
Max. power consumption	31W
Supported voltage range	44—57V DC
Max. TX power	25 dBm
MIMO	(3) 4 x 4
Operating frequency	
5 GHz low-band radio	Ch 36-64
5 GHz mid-band radio	Ch 100-132
5 GHz high-band radio	Ch 149-165
Antenna	Integrated dual-mode antenna array
Antenna gain	
Small cell	15 dBi
Large cell	10 dBi

Antenna beamwidth	
Small cell	50°
Large cell	90°
Button	Factory reset
LEDs	R/G/B
Mounting	VESA-compatible mount, pole/wall (Brackets included)
Operating temperature	-40 to 70° C (-40 to 158° F)
Operating humidity	5 to 95% noncondensing
Certifications	CE, FCC, IC

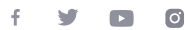
Software

WiFi standards	802.11 a/n/r/k/v/ac/ac-wave2
Wireless security	WEP, WPA-PSK, WPA-Enterprise (WPA/WPA2, TKIP/AES), 802.11w/PMF
VLAN	802.1Q
Advanced QoS	Per-user rate limiting
Guest traffic isolation	Supported
Power save	Supported
Beamforming	Supported
WMM	Voice, video, best effort, and background
Concurrent clients	1500+

Supported Data Rates (Mbps)

802.11a	6, 9, 12, 18, 24, 36, 48, 54 Mbps
802.11ac	6.5 Mbps to 1.7 Gbps (MCS0 - MCS9 NSS1/2/3/4, VHT 20/40/80) 58 Mbps to 1.7 Gbps (MCS0 - MCS9 NSS1/2, VHT 160)

Stay in Touch



[Terms and Conditions](#) | [Terms of Service](#) | [Privacy Policy](#) | [Return Policy](#) | [Cookies Settings](#)

© 2024 Ubiquiti, Inc. All rights reserved.